

For Diagnostic Impedance and Reflex measurement
Middle Ear Analyzer MI 44



- Manual and automatic pump control
- Tympanometry with selectable pressure ranges and pump speeds
- Ipsi- and contralateral Reflex Tests - now with tone and noise
- Reflex Decay Test and ETF Test for intact and perforated eardrums
- Easy detachable probe tip for headband or handheld use
- Exchangeable Probe Insert for Screening and Diagnostic use
- RS 232 serial PC interface



The Reference for efficient Middle Ear Examination

Diagnostic Middle Ear Analyzer MI 44

Fast diagnosis of the middle ear

The MI 44 middle ear analyzer is built to meet the demands of clinics and hearing specialists who require a comprehensive middle ear analysis instrument.

Tests

Tests include automatic and manual pump control tympanometry with selectable pressure ranges and pump speeds, ipsi- and contralateral reflex tests and reflex decay. Eustachian Tube Function may be performed on patients with intact or perforated eardrums.

Probe

The new, adjustable probe system features a convenient detachable probe tip that can be used for both diagnostic and screening purposes.

Easy, comfortable to operate

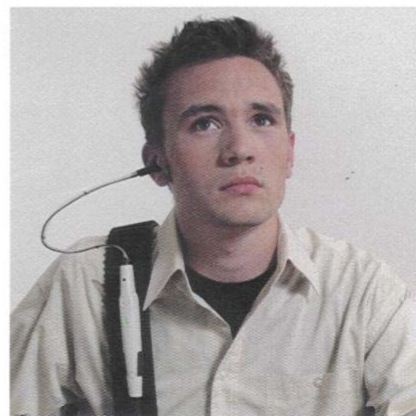
The probe seal in the ear is easily checked with the built-in indicator light. The tympanogram and test results are displayed in real time on the graphical LCD screen. The test results for both ears are stored and can be printed out together.

Automatic functions


The intensity of the four frequencies of the reflex test is increased automatically until a reflex is detected or the maximum is reached. The maximum level is adjustable to protect sensitive ears. The reflex test is performed at the pressure where the maximum compliance was detected.

The results

All test results can be printed out on the internal thermal printer. All parameters can be preset as per individual requirements.



Technical data

Tympanometry mode:	
Probe frequency, intensity	226 Hz \pm 1%, 85 dB _{SPL} into 2 cm ³
High frequency	678 Hz / 800 Hz / 1000 Hz
Pressure range	+ 300 to - 600 daPa
Volume range	0,1 to 6,0 ml
Accuracy	\pm 5% or \pm 10 daPa
Test time	< 3 seconds
Reflex Mode:	
Test frequencies	500, 1000, 2000, 4000 Hz \pm 2%
Noise Stimuli	WN / HP / LP
Test method	ipsilateral, contralateral
Intensities ipsilateral	70 ... 105 dB _{HL}
Intensities contralateral	70 ... 110 dB _{HL} with button contra phone 70 ... 120 dB _{HL} with TDH 39 contra phone
Ipsilateral reflex test	with AGC
Intensity setting	automatic or manual
Reflex Decay Mode:	
Test time	13 sec., 10 sec. auto tone present
Eustachian Tube Mode:	
Pressure range	+ 400 to - 400 daPa
General:	
Standard	IEC 601-1, IEC 645-5 class 2, medical directive 93/42/EEC 
Test program	Reflex test selectable
Memory	Storage of test results for both ears
Menu	For adapting to individual needs (Pump speed, accuracy, reflex mode etc.)
Probe	Lightweight adjustable hand-held probe with built-in control light and switch
Printer	fast, virtually silent thermal printer
Print time	4 s / 12 s (Test results of both ears)
Display	Graphic LCD-Display, contrast adjustable
Power supply	Mains 100... 240 V~, 50/60 Hz, 25 VA
PC Interface	serial RS 232C, 9-pin connector
Dimension and weight	W x D x H: 39 x 29 x 11 cm / 2,6 kg
Standard access.MI44:	Probe with diagnostic and screening insert, TDH 39 contra phone, shoulder strap, ear tip set, calibration cavity with probe holder, mains cable, roll of paper, connector cover

Specifications are subject to change without notice

Amplivox Ltd

29-30 Station Approach
Kidlington, Oxford, England, OX5 1JD
☎: +44 (0)1865 842411
Fax: +44 (0)1865 841853
E-mail: sales@amplivox.ltd.uk
Website: www.amplivox.ltd.uk



MAICO Diagnostic GmbH

Salzufer 13/14
D 10587 Berlin
Tel.: ++4930/70 71 46 50
Fax: ++4930/70 71 46 99

email: export@maico-diagnostic.com
Internet: www.maico-diagnostic.com

850 257/2 11/05